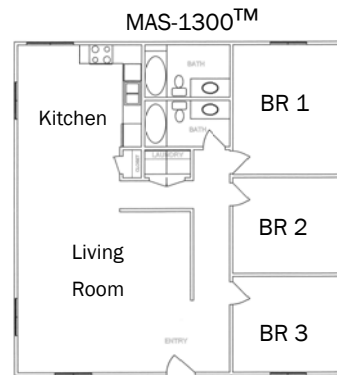


**MAS™ is Revolutionizing the Way Future Housing will be Constructed.**

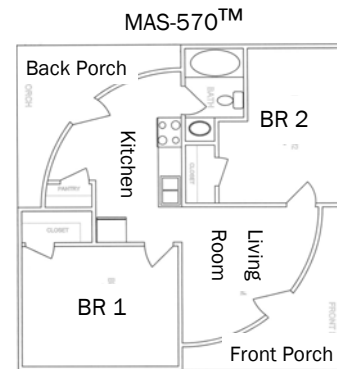
Imagine a structure that stands up to any natural disaster or fire, costs a fraction of conventional construction, can be built in a week, is 100% GREEN is extremely energy efficient, and has an exterior structure, including roofing and siding, with an expected life span of hundreds of years with virtually NO maintenance. A typical MAS-1300™ residential home has 1300 sq. ft., 3 bedrooms, 2 bathrooms, and an optional loft. With an 18 foot high ceiling it is simply breathtaking.

A typical MAS-570™ residential home has 570 sq. ft. 2 bedrooms, 1 bathroom. With a 12 foot high ceiling it is also impressive.

Both the MAS-1300™ and MAS-570™ can be built with several bed and bathroom layouts.



3 Bedroom 2 Bath Option



2 Bedroom 2 Bath Option

**Modern Arch Structures, LLC**  
Corporate Headquarters

3400 Cabana Dr. #2043  
Las Vegas, NV 89122, USA  
(702) 625-ARCH (2724) • Fax: (702) 410-6334

- Utah Branch Office: (435) 250-3883
- Idaho Branch Office: (208) 717-9182
- United Kingdom: 08703 928 312
- Austria: 0720 981 399

[www.modernarchstructures.com](http://www.modernarchstructures.com)



*It is here... it is real... it is MAS™*

**MAS-1300**  
**MAS-570**  
**Type R**



## MAS™ MODELS:



MAS-1300 Residential Model. In this sample the exterior concrete is finished with a faux natural rock look at no additional material cost. This model has 1300 sq. ft. with an 18 ft. high ceiling. An optional loft is available.



MAS-570 Residential Model. In this sample the exterior concrete is finished with a faux brick look at no additional material cost. This model has 570 sq. ft. with an 12 ft. high ceiling.

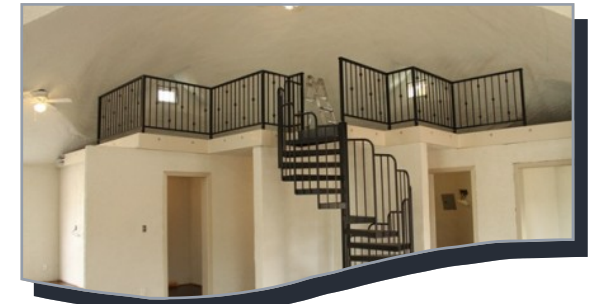
## MAS™ KEY FEATURES:

- ◆ Very Low Cost... Compared to conventional construction
- ◆ Natural Disaster Proof
- ◆ 100% Concrete
- ◆ 20 Year Warranty
- ◆ 100% Green
- ◆ Fire Proof
- ◆ Natural Disaster Resistant
- ◆ Virtually NO Maintenance
- ◆ One Week Construction Time
- ◆ Endless Finishes—No Additional Material Costs
- ◆ Easy To Build—Minimal Labor
- ◆ Residential, Commercial, Industrial, Public Service, Schools
- ◆ 100's of Years Lifespan
- ◆ Connectable (as shown below)



## INTERIOR SHELL FINISHES:

- ◆ Insulation to R-60 equivalent available
- ◆ The interior shell is 100% FIRE PROOF concrete prior to the application of any decorative finish options
- ◆ Finish options can be faux tile, stone, brick, a traditional textured or smooth finish and many others.



MAS-1300 Residential Model showing an optional loft on top of the 3 bedroom 2 bath interior layout.